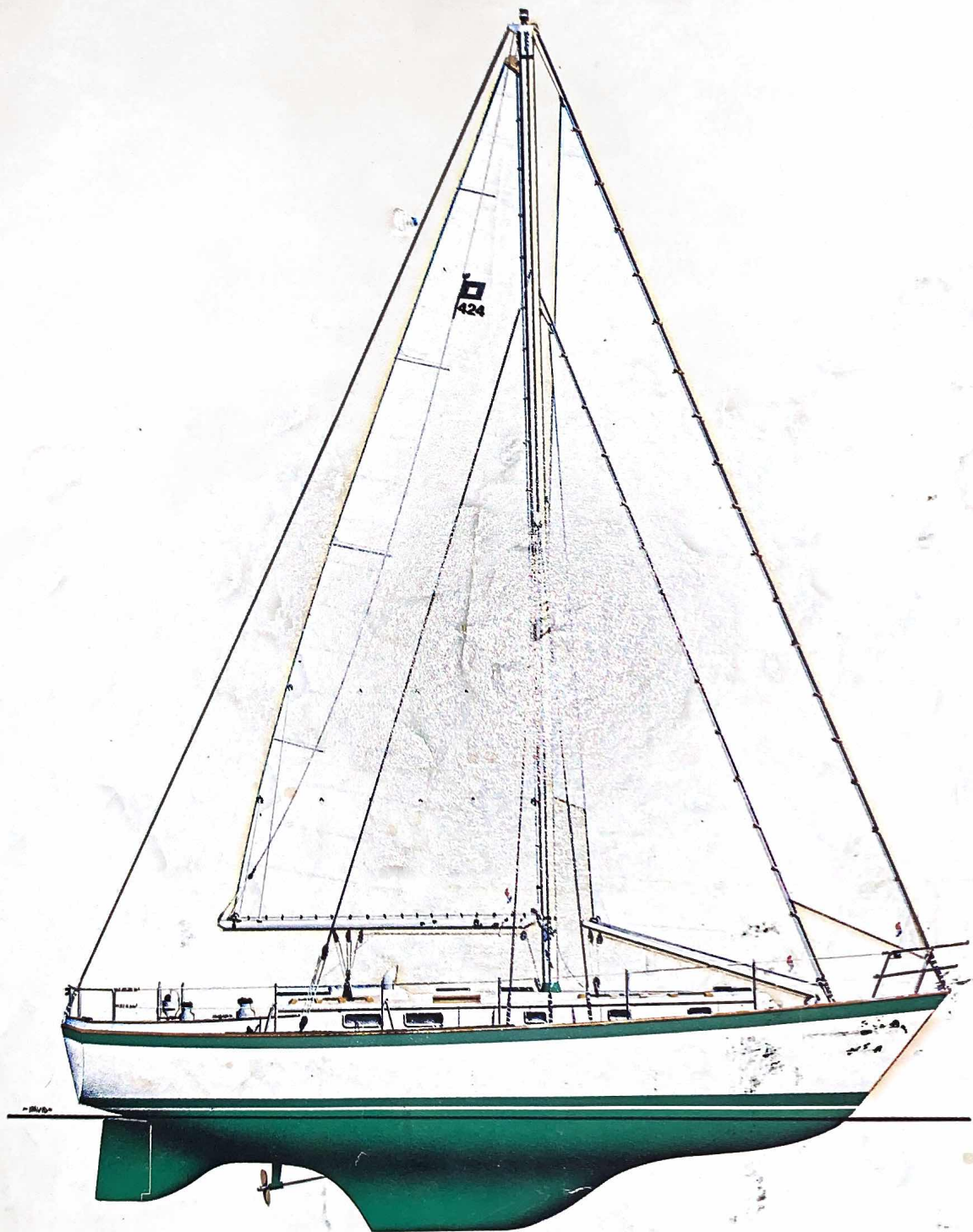
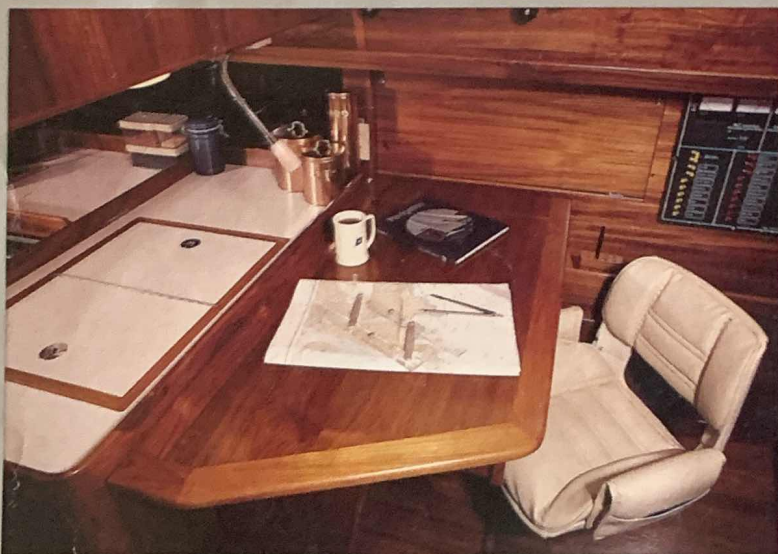


# Pearson 424



7'

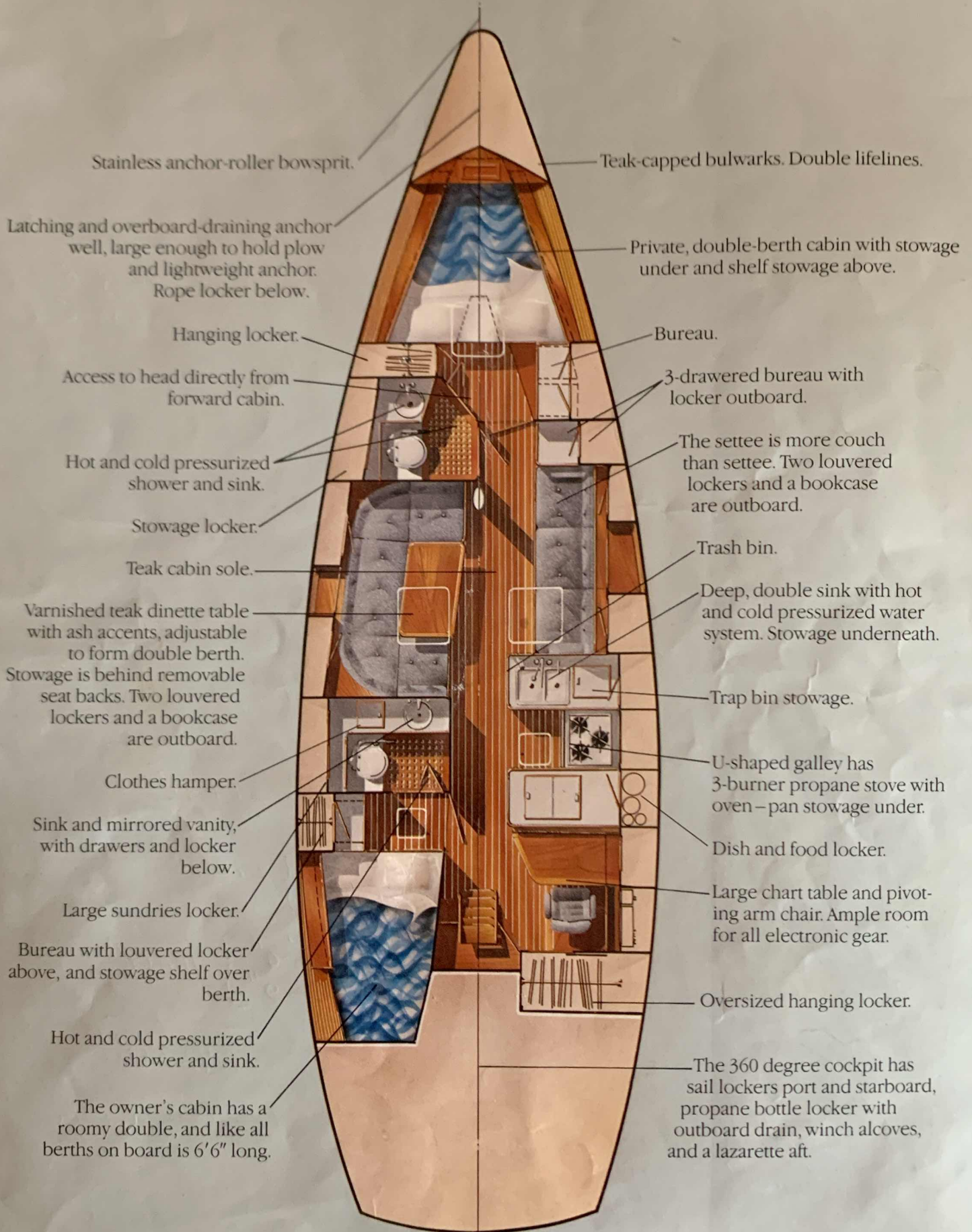


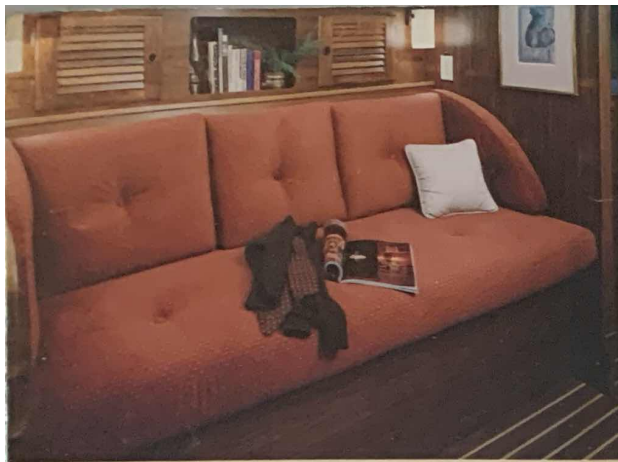
The Pearson 424 is a modern, classic cruising yacht intended to satisfy the timeless requirements of the knowledgeable cruising skipper.

She can be delivered to you as a sloop, ketch, or cutter, whichever your preference. Either of the two interior plans shown here will warmly accommodate you, your family and guests at an elevated level of comfort.

# Arrangement C

180





## Arrangement A

Latching and overboard-draining anchor well, large enough to hold plow and lightweight anchor. Rope locker below.

Vanity with stainless steel wash basin. Lockers outboard and below.

Luxurious main cabin with solid-teak, drop-leaf table. Facing settees convert to 6'6" transom berths—louvered lockers and bookshelf behind each. Additional stowage behind seat backs.

Teak cabin sole.

U-shaped galley has 3-burner propane stove with oven—pan stowage under.

Deep, double sink with hot and cold pressurized water system. Stowage underneath.

Dish and food locker.

Trap bin stowage.

Trash bin.

Huge, owner's stateroom. Drawers above and under the double berth.

The 360 degree cockpit has sail lockers port and starboard, propane bottle locker with outboard drain, winch alcoves, and a lazarette aft.

Stainless anchor-roller bowsprit.

Oversize guest cabin. Shelves outboard above berth.

Dressing seat with provision for optional toilet.

Large hanging locker. Locker and 4-drawer bureau adjacent.

Wet locker.

Midships companionway.

Clothes hamper.

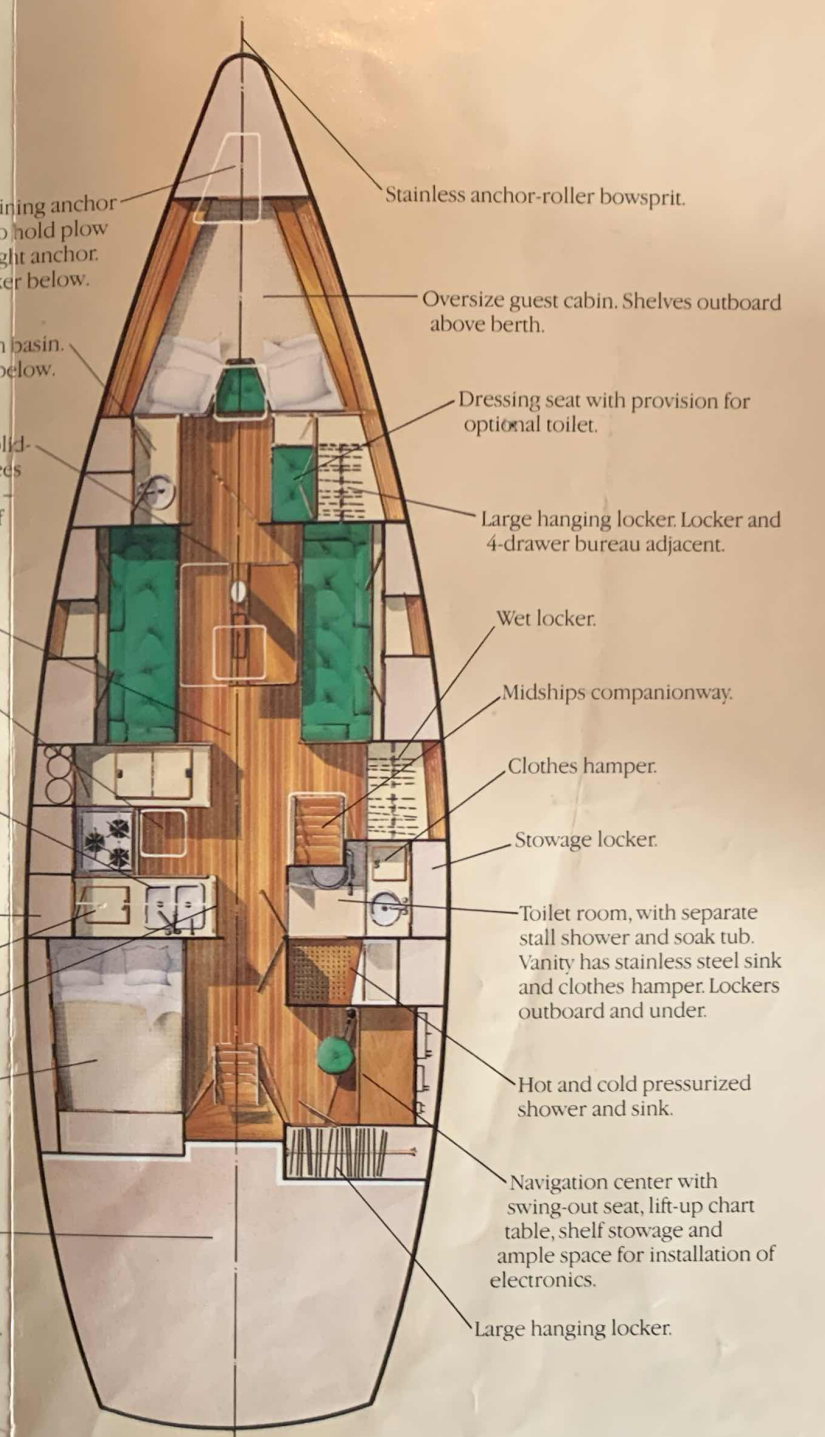
Stowage locker.

Toilet room, with separate stall shower and soak tub. Vanity has stainless steel sink and clothes hamper. Lockers outboard and under.

Hot and cold pressurized shower and sink.

Navigation center with swing-out seat, lift-up chart table, shelf stowage and ample space for installation of electronics.

Large hanging locker.





**The Boat** Over 200 Pearson 424s have been built. That's a continuing testimonial to her acceptance by the knowledgeable skipper who demands exceptional sailing performance combined with a livable, efficient interior.

Although the 424 was not designed to be a racing boat, I have always had very strong feelings about the performance characteristics of a cruiser. The 424 expresses these feelings well.

The boat's sailing performance has been one of her charms from the day the first hull was launched. She has recorded an admirable number of high finishes on the racing circuit. She has made fast passages between the mainland and Bermuda and cruised comfortably to the Galapagos. She has sailed for weeks on end, conducting whale research off the Newfoundland and Labrador coast.

While far horizons might not fit your itinerary, making fast passages with a minimum crew, having the ability to outrun threatening storms, and having on-deck/belowdecks comfort over extended periods are an important function of cruising boat design. It is nice to know that the 424 has proved herself to have these capabilities.

From an engineering point of view a boat with as much cubic footage as this one presents the designer with a great degree of flexibility – it lets us offer you different layouts, without treading the expensive route of pure custom design. The size also makes it possible for the designer to make very efficient utilization of the space available without compromise to the proper proportions of human engineering. The result is great overall comfort and versatility.

So there you have it. We set out to design a big, roomy, safe, comfortable 42-foot cruising boat with exceptional sailing characteristics, and from what we hear back, we did it.

Come Sail With Us....

*Bill Shaw*



MAHI MAHI  
BARRINGTON RI

# Pearson 424

## Specifications:\*

L.O.A. 42'4" (12.90m)  
 D.W.L. 33'8" (10.26m)  
 Beam 13'0" (3.96m)  
 Draft 5'3" (1.60m)  
 Displacement 23,000 lbs. (9,545.50 kgs)  
 Ballast 7,634 lbs. (3,470.00 kgs)  
 Sail Area  
   (Ketch Rig) 723 sq. ft. (67.16m<sup>2</sup>)  
   (Cutter Rig) 726 sq. ft. (67.44m<sup>2</sup>)  
 Mast Height Above D.W.L.  
   (Ketch Rig) 48'10" (14.88m)  
   (Cutter Rig) 51'8" (15.75m)  
 Headroom 6'4" (1.93m)  
 Fresh Water Capacity 170 gal. (643.50 l)  
 Fuel Capacity 80 gal. (302.80 l)  
 Power Diesel

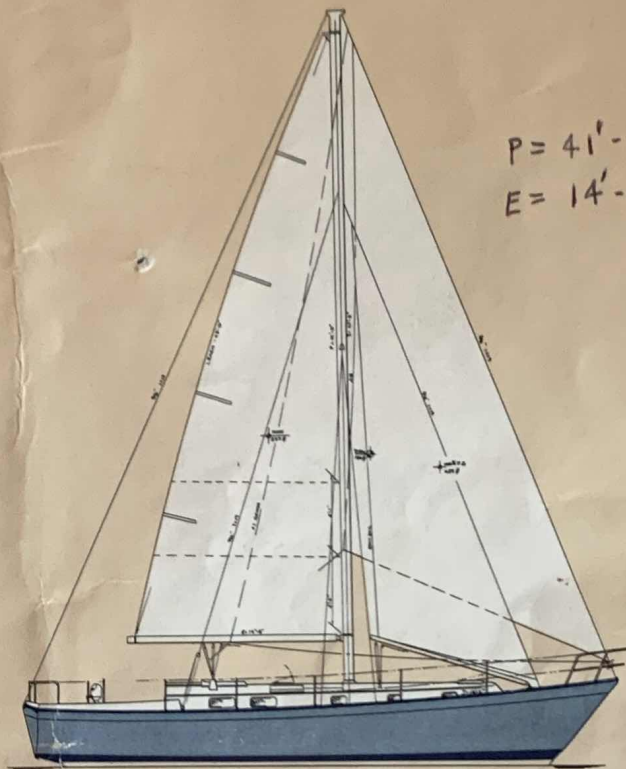
\*Approximate  
Also available as a sloop.



Ketch Rig

$1 \text{ mm} = 0.48'$

$\frac{1}{4}'' = 3.05'$



Cutter Rig

$I = 44'-1''$   
 $J = 15'-9''$  }  $347 \text{ ft}^2$

$P = 38'-0''$   
 $E = 14'-6''$  }  $276 \text{ ft}^2$

$PY = 23'-0''$   
 $EY = 8'-9''$  }  $100 \text{ ft}^2$

$723 \text{ ft}^2$